

The King's Own Royal Lancaster Regiment



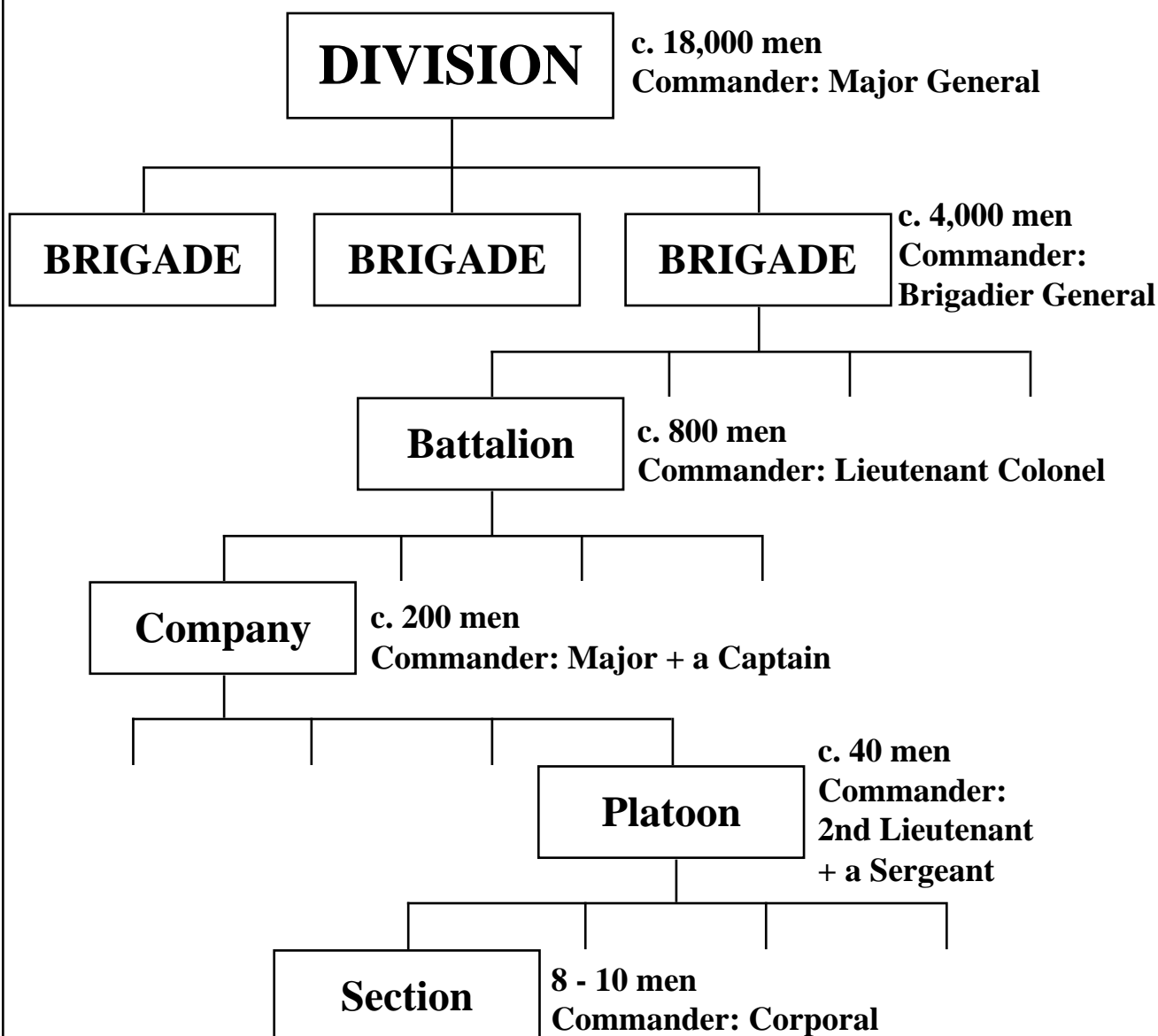
The Great War 1914 - 1919



Fact Sheet

The Structure of a British Army Division

This chart shows the structure of a typical British Army infantry Division of the Great War. There were several changes during the war, notably to the organisation of the machine gun and artillery units. In 1918 the number of battalions per Brigade was reduced to three, the fourth battalion being disbanded (see the 'profiles' of the 7th and 11th Battalions).



In addition to the infantry units shown above the Division would have included detachments of Royal Engineers, Royal Army Medical Corps, Signals & Transport Troops as well as three Brigades of the Royal Field Artillery.